

ADVANCED WORKFLOW ENGINE

KEY RESULTS



- **Automate, optimize business processes** - Create automated workflows without scripting



- **Easy-to-use interface** - Drag-and-drop and fill-in-the-blank workflow design



- **Shareable, editable format** - XML-based, reusable, and shareable

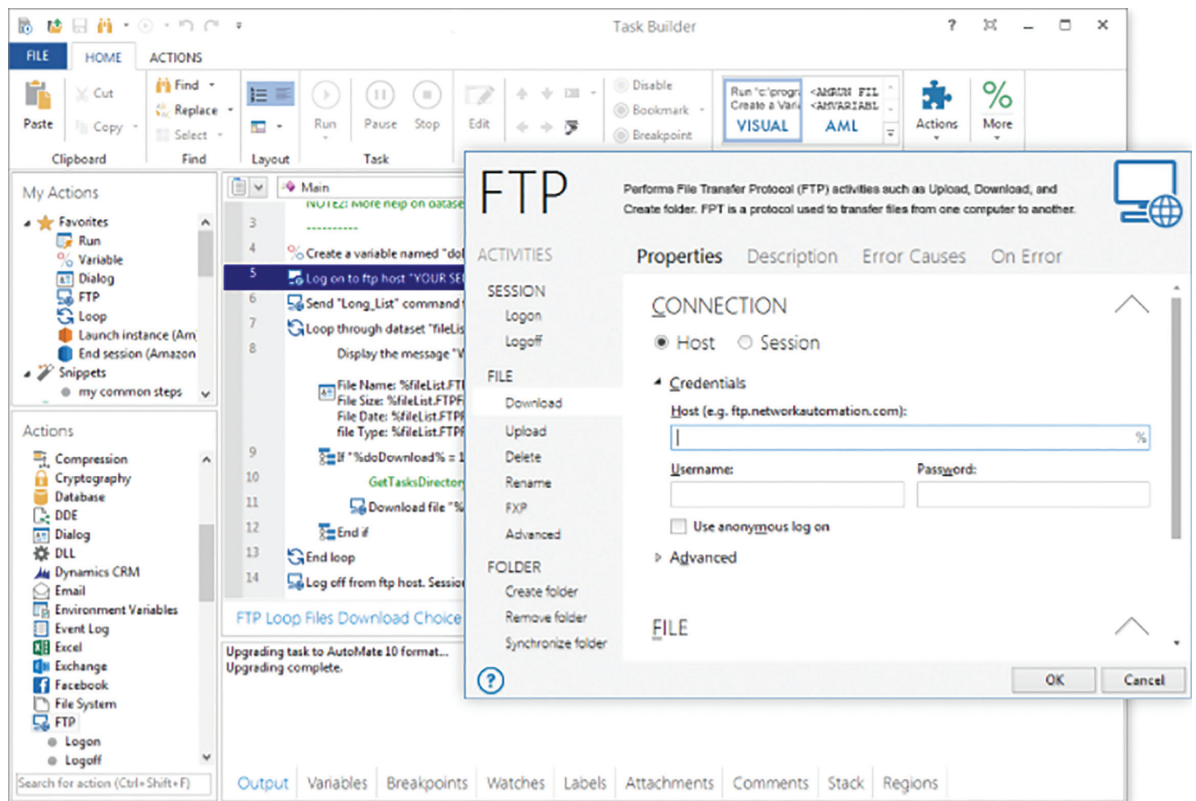
- **Powerful out-of-the-box integrations** - AWE offers a variety of integrations with the applications that keep your business running

- **Integrate with cloud storage** - Numerous actions can connect to Azure blob and AWS S3 storage.

The Advanced Workflow Engine (AWE) is a powerful tool that allows rapid construction of Windows automation routines without any programming. It replaces legacy batch files, scripts, and custom application development, enabling complete IT process automation without writing a single line of code. AWE provides an incredibly easy-to-use, intuitive interface for developing automation applications. AWE is used to build, manage, and launch automated “workflows” within EFT Event Rules.

AWE ACTIONS

AWE provides an incredibly easy-to-use, intuitive interface for developing automation applications. The basic building blocks are called actions, which are plain-English, drag-and-drop, fill-in-the-blank dialog boxes that you can use to build AWE tasks. Actions enable the development of sophisticated automation processes, and eliminate the need for code. You could think of them as the steps that do the actual work of a task. You can drag and drop actions in the Task Builder to build a series of AWE steps that collectively make up the task. You can view all available actions in the Task Builder’s **Available Actions** pane, categorized into folders.



ABOUT GLOBALSCAPE

Globalscape is a pioneer in securing and automating the movement and integration of data seamlessly in, around and outside your business, between applications, people and places, in and out of the cloud. Founded in 1996, Globalscape's data exchange and integration software and services are trusted by over 13,000 customers in over 150 countries worldwide, including global enterprises, governments, and small and medium enterprises. Headquartered in San Antonio, TX, Globalscape enables companies to increase business agility by unleashing the power of data. Whether you are a line-of-business stakeholder struggling to connect multiple cloud applications or an IT professional tasked with integrating partner data into homegrown or legacy systems, Globalscape provides cloud services that automate your work, secure your data and integrate your applications – while giving visibility to those who need it. Globalscape makes business flow brilliantly. Globalscape has consistently been named a top workplace by Computerworld, the San Antonio Business Journal, Texas Monthly, and the San Antonio Express-News, among others.

AWE FEATURES AND BENEFITS

AWE includes 100s of actions and activities that involve extensive support for FTP/SFTP, SQL, Email, HTTP, VB Scripts, VMWare Host and VMWare Guest, Services, Environment Variables, Exchange, MSMQ, Amazon and Azure cloud storage connections, and many more. This list does not begin to address all the possible automated solutions that can be constructed and deployed. A task can contain any number of actions/activities in any order, creating limitless possibilities.

Intuitive Task Development and Debugging - The Task Builder is an intuitive interface for developing automation applications. It is used to visually construct and examine the steps that a task should carry out when it is run. To ensure that newly created tasks are working properly before they are put into production, the Task Builder also includes a variety of testing and debugging features that outputs real-time information about a running task. This information enables monitoring of each step during task execution, allows inspection of variables, datasets and other dynamic data, and aids developers with troubleshooting important aspects of a task as it is being constructed.

Variable Support - AWE includes full support for variables that are used to pass dynamic data during task execution and also supports one and two-dimensional arrays for implementing more complex logic to tasks. Additionally, many actions support the creation of datasets, which can hold multiple rows and columns of dynamic data. This is useful when retrieving data that describes a collection of information such as a database or spreadsheet.

Replaces Code - Reduces costs and hassles associated with developing and maintaining code, scripts, and batch files. For developers, increases the speed of development without sacrificing power, saving time and future code maintenance hassles. For non-developers, AWE provides the simplicity to complex processes without the need for code or syntax.

Easy to Use - Provides an incredibly user-friendly, yet intuitive set of interfaces allowing you to visually create, manage and execute your automated tasks without requiring any programming expertise. Instead of writing scripts and batch files, business and IT processes are created using the Task Builder interface which contains over 300 prebuilt actions and activities that you can easily drag-and-drop together to form powerful automated tasks.

Saves Time and Reduces Errors - Network managers and IT administrators can eliminate time spent on repetitive IT processes so they can focus on other aspects of their jobs. Additionally, automation eliminates errors introduced during manual processes that often result in network downtime, delayed access to data, and user complaints. Streamline inefficient processes and operations with reliable, repeatable, automation and eliminating errors introduced by process delays and repetitive worker activities.

Accelerates Flow of Information - Drag-and-drop building enables tasks to be constructed rapidly. This accelerates data flows, allowing business users and decision-makers to become more effective and efficient by delivering real-time access to accurate data.