

DESKTOP TRANSFER CLIENT (DTC)

KEY RESULTS



- Guaranteed delivery of interrupted transfers



- Validate transfer success through automatic data integrity checksums



- Completely rebrandable interface
- Small footprint—easy on system resources

ABOUT GLOBALSCAPE

Globalscape is a pioneer in securing and automating the movement and integration of data seamlessly in, around and outside your business, between applications, people and places, in and out of the cloud. Founded in 1996, Globalscape's data exchange and integration software and services are trusted by over 13,000 customers in over 150 countries worldwide, including global enterprises, governments, and small and medium enterprises. Headquartered in San Antonio, TX, Globalscape enables companies to increase business agility by unleashing the power of data. Whether you are a line-of-business stakeholder struggling to connect multiple cloud applications or an IT professional tasked with integrating partner data into homegrown or legacy systems, Globalscape provides cloud services that automate your work, secure your data and integrate your applications – while giving visibility to those who need it. Globalscape makes business flow brilliantly. Globalscape has consistently been named a top workplace by Computerworld, the San Antonio Business Journal, Texas Monthly, and the San Antonio Express-News, among others.

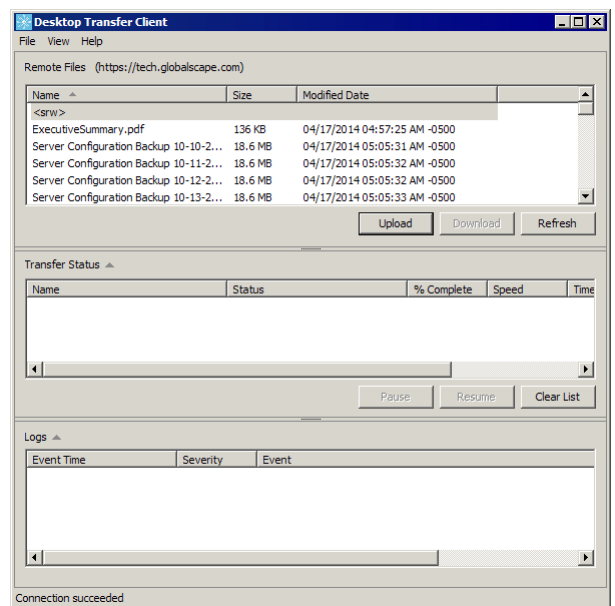
EXCHANGE FILES WITH ANY TRADING PARTNER

Globalscape's Enhance File Transfer™ Desktop Transfer Client (DTC) is for clients that need a more robust transfer engine that does not require Java installation. The DTC can be used by any trading partner, offering lower cost and increased flexibility to your partners, reduced setup and implementation times, zero maintenance, and available from any computer connected to the Internet.

The client is pre-configured to connect to a single IP address and leverages the Windows Single-Sign-On functionality. The intuitive interface requires no special training to upload and download files. If you know how to use Windows Explorer, you can use the DTC. Just click Upload or Download, then select one or multiple files to transfer. The Transfer Status pane lets you know when the transfer has completed.

DTC FEATURES

- Works on Windows 7, Windows 8, Windows 2012 R2 or later
- Easy to install on remote systems
- Locked to only transfer files to your site
- Globalscape support
- Push large files > 2GB
- Push large number of files
- HTTPs protocol only
- Logging locally on system



www.globalscape.com
1.800.290.5054

4500 Lockhill-Selma Rd, Suite 150
San Antonio, TX 78249
United States

GLOBALSCAPE